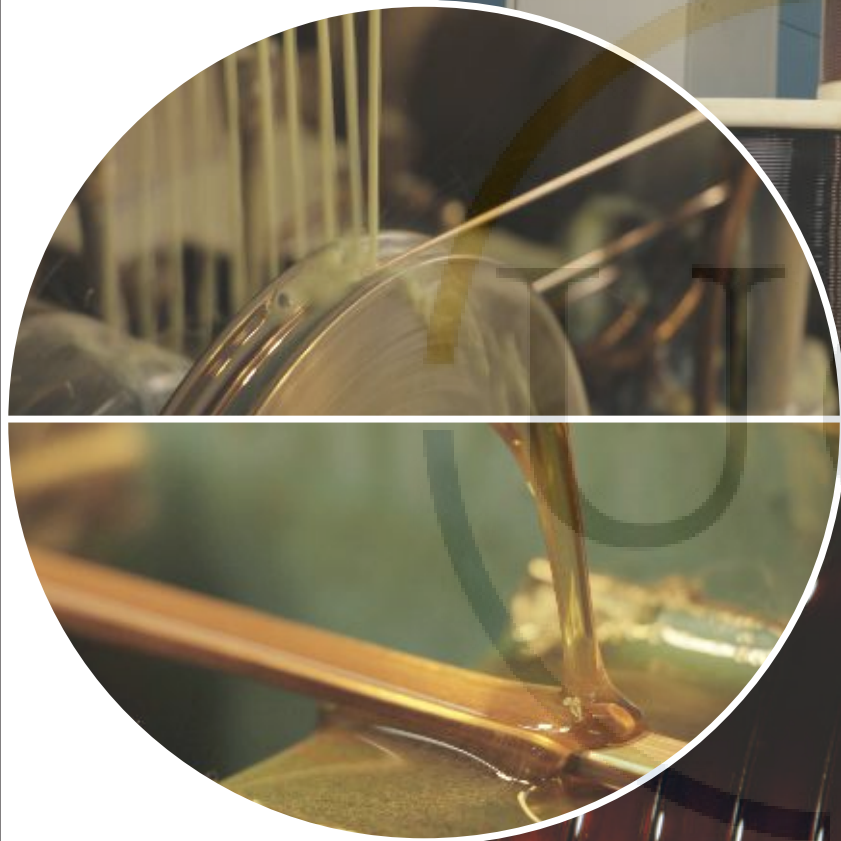




United Copper Industries



MFG. All Types of Enamelled, Covered & Insulated Copper Conductors. (Round & Rectangular)



United Copper Industries

**The Lifeline to all Electrical connections is Copper
We craft these connections.....**

UCI has become renowned name as one of the leading manufacturers of the magnet wires in India.

UCI core value lies in principle of quality, reliability, and on-time service. Our every endeavor is focused on ensuring in-depth quality at every aspect of the manufacturing process, right from raw material to delivery process.

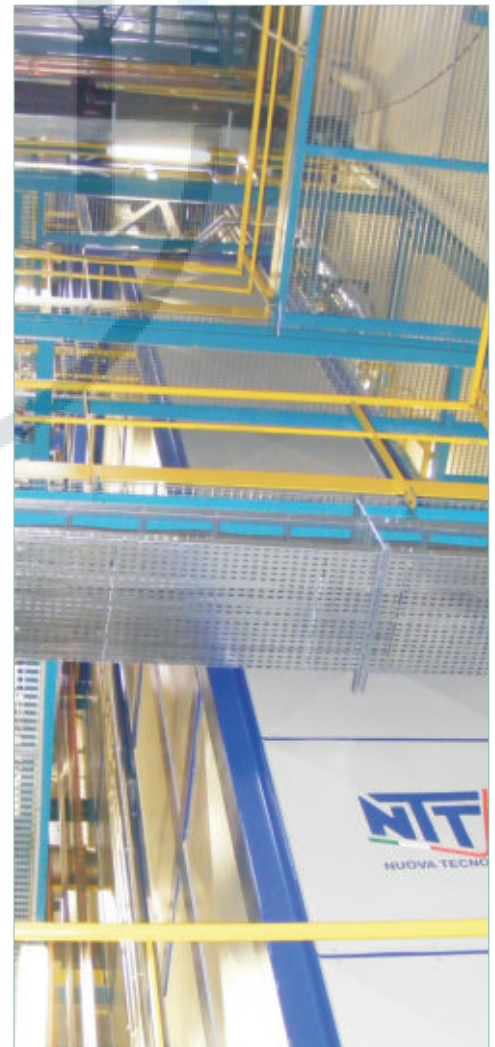
Located in the western coastal region of Union Territory of Daman & Diu, UCI has spread in more than 45000 sq. fts. area of manufacturing.

Our state of art unit is equipped with world-class technology, consistency & on-line testing process. UCI family of more than 150 highly qualified and experienced members, ensures that we deliver every product as per customer satisfaction on-time every time.

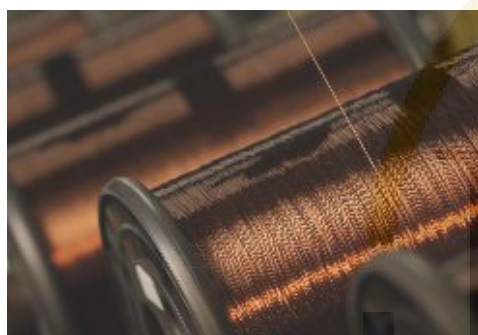
UCI serves the needs of Public & Private sector companies in India, Apart from this our products are being used in diverse industrial domain such as Locomotive, Transformers, Automobiles, Motors, Pumps, Switchgear, Electrical Appliances, Lighting & various others.

In more than 80% of our 250 plus esteemed customers we enjoy the status of the most preferred supplier, this volume itself speaks our focus on consistency in terms of quality, loyalty & timely services.

Our present annual production capacity is 7000 MT and our focus is scaling it to 10000 MT in the coming years.

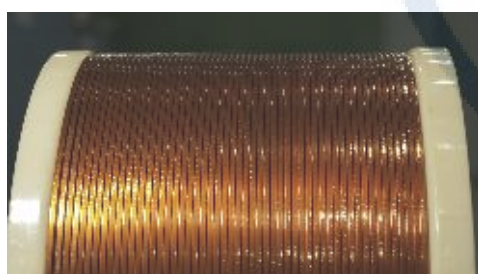


Round Enamelled Copper Winding Wire



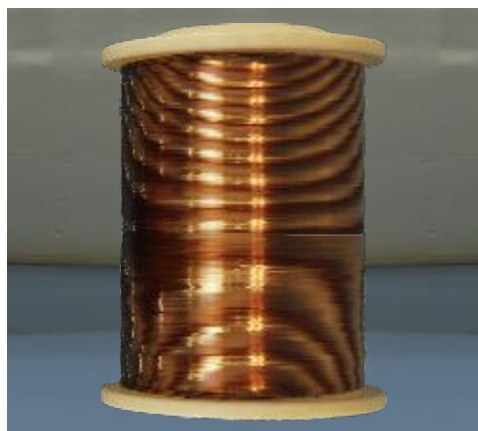
Specification		Size Range
Modified Polyester Enamelled Round Copper Wire, Class 155 (Modified Polyester)	IS 13730/ IEC 60317 Part 3 : 1996	8 swg to 43 swg 4.06 mm to 0.091 mm
Polyesterimide Enamelled Round Copper Wire, Class 180 (Polyesterimide)	IS 13730/ IEC 60317 Part 8 : 1996	8 swg to 43 swg 4.06 mm to 0.091 mm
Polyesterimide overcoated with polyamide-imide enamelled Round Copper Wire, Class 200 (Dual Coated)	IS 13730/ IEC 60317 Part 13 : 1993	8 swg to 43 swg 4.06 mm to 0.091 mm
Self Solderable Polyurethane Enamelled Round Copper Wire, Class 155 (Pu. Self Solderable)	IS 13730/ IEC 60317 Part 20 : 1993	14 swg to 43 swg 2.032 mm to 0.091 mm
Self Solderable Polyurethane Enamelled Round Copper Wire, Class 180 (Pu. Self Solderable)	IS 13730/ IEC60317 PART 23	14 swg to 43 swg 2.032 mm to 0.091 mm
Single Coated Polyamide-Imide Round Copper Wire Class 220 Wires. (PAI)	IS 13730/ IEC60317 PART 57	8 swg to 36 swg 4.064 mm to 0.200 mm

Kapton/ Polyimide Copper Conductor For Traction Motors



Specification		Size Range
Kapton / Polyimide Copper Conductor Class 220 & Class 240 (Approved by RDSO & CLW)	As per customer specification	Width Minimum 3 mm to Maximum 20 mm Thickness Minimum 1mm to Maximum 5 mm

Corona Resistant Round Copper Enamelled Winding Wires



Specification		Size Range
Polyesterimide overcoated with polyamide-imide enamelled Round Copper Wire, Class 200 (Approved by RDSO)	IS 13730/ IEC 60317 Part 13	14 swg to 23 swg 2.032 mm to 0.610 mm

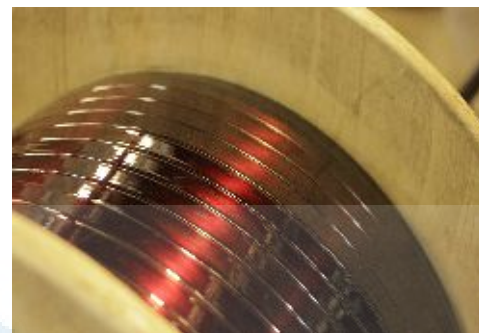


United Copper Industries

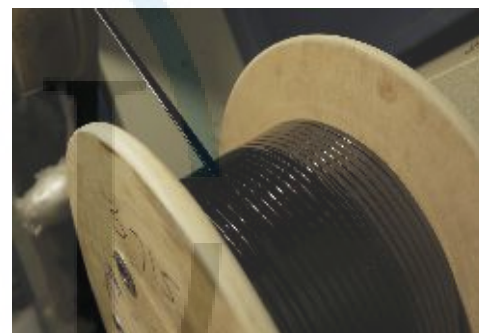
Rectangular Enamelled Copper Winding Wire (STRIPS)

Delivering quality on time, every time

Specification		Size Range
Polyester Enamelled Rectangular Copper Wire Class 155	IS 13730-16 IEC 60317-16	Cross Sectional area 3 to 75 Sqmm Width 3 to 20 mm Thick 1 to 5 mm
Polyesterimide Enamelled Rectangular Copper Wire Class 180	IS 13730-28 IEC 60317-28	Cross Sectional area 3 to 75 Sqmm Width 3 to 20 mm Thick 1 to 5 mm
Polyesterimide overcoated with polyamide-imide enamelled Rectangular Copper Wire Class 200	IS 13730-29 IEC 60317-29	Cross Sectional area 3 to 75 Sqmm Width 3 to 20 mm Thick 1 to 5 mm



Insulation Class		
Product Range	Thermal Class	Specification
Modified Polyester	155° C	IS-13730-Part-16
Polyesterimide	180° C	IS-13730-Part-28
Dual Coated	200° C	IS-13730-Part-29



Self Bonding Enamelled Copper Wire

Specification		Size Range
Polyurethane + Bonding, Class 155	IS 13730/ IEC 60317 Part 35	14 swg to 23 swg 2.032 mm to 0.610 mm
Polyamide-Imide + Bonding Class 180	IS 13730/ IEC 60317 Part 37	14 swg to 23 swg 2.032 mm to 0.610 mm



Locomotive



Transformers



Automobiles



Paper / Polyester / Nomex Insulated Copper Conductor



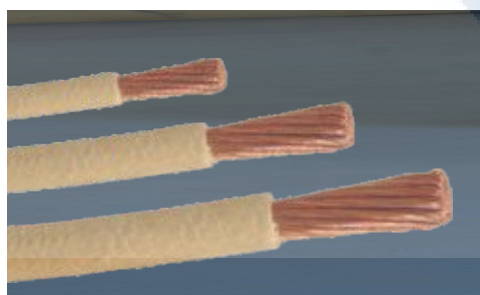
Specification		Size Range
Paper Covered Round Copper Conductor	IS 7404 / Part 1	Conductor Diameter 1.00 mm to 5.00 mm
Paper Covered Rectangular Copper Wire	IS 13730-27 IEC 60317-27	Cross Sectional area 4 to 75 Sqmm Width 4 to 20 mm Thickness 1.0 to 5.0 mm
Aromatic polyamide (Nomex) Paper Covered Rectangular Copper Wires Temp. index 200	IS 11174	Cross Sectional area 5 to 52 Sqmm Width 4 to 13mm Thickness 2.0 to 4.0 mm

Fiber Glass Covered Copper Strips & Wire



Specification		Size Range
Fiber Glass Covered Copper Strips 155	IS 13730 Part 32	Cross Sectional area 3 - 75 Sqmm, Width 3-15 mm & Thickness 1-5 mm
Fiber Glass Covered Copper Strips 180	IS 13730 Part 31	Cross Sectional area 3 - 75 Sqmm, Width 3-15 mm & Thickness 1-5 mm
Fiber Glass Covered Copper Strips 200	IS 13730 Part 33	Cross Sectional area 3 - 75 Sqmm, Width 3-15 mm & Thickness 1-5 mm

Kraft/Crepe Paper covered copper conductor.



Specification		Size Range
Kraft/Crepe Paper covered copper conductor.	IS - 8130 IS - 8572	2.5 sq.mm to 200 sq.mm

Electrical Pumps



Electrical Appliances



Electrical Motors





United Copper Industries

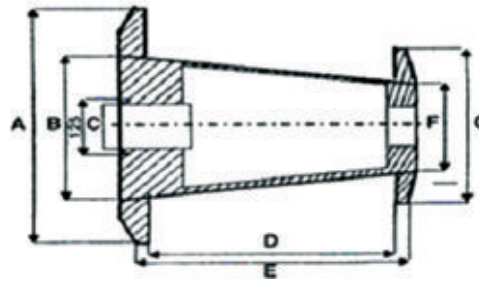
Delivering quality on time, every time

Diameter and Increase in Diameter of Enamelled Round Winding Wire. (BASIS : IS 13730-0-1 IEC 60317-0-1)

Nominal Conductor diameter SWG (mm)		Conductor tolerance (mm)	Grade 1		Grade 2		Grade 3	
			minimum Increase (mm)	maximum overall dia (mm)	minimum Increase (mm)	maximum overall dia (mm)	minimum Increase (mm)	maximum overall dia (mm)
8	4.064	0.041	0.050	4.155	0.092	4.201	0.138	4.245
9	3.658	0.037	0.049	3.746	0.089	3.791	0.134	3.824
10	3.251	0.033	0.048	3.336	0.086	3.380	0.130	3.422
11	2.946	0.030	0.045	3.029	0.084	3.072	0.127	3.112
12	2.642	0.027	0.043	2.722	0.031	2.764	0.123	2.803
13	2.337	0.024	0.042	2.415	0.079	2.455	0.119	2.493
14	2.032	0.020	0.041	2.108	0.077	2.147	0.116	2.184
15	1.829	0.019	0.040	1.903	0.075	1.941	0.113	1.977
16	1.626	0.017	0.039	1.698	0.073	1.735	0.110	1.770
17	1.422	0.015	0.038	1.492	0.071	1.528	0.107	1.562
18	1.219	0.013	0.035	1.285	0.067	1.318	0.100	1.350
19	1.016	0.011	0.034	1.080	0.065	1.113	0.098	1.144
20	0.914	0.010	0.034	0.976	0.063	1.008	0.095	1.038
21	0.813	0.009	0.032	0.872	0.060	0.902	0.090	0.931
22	0.711	0.008	0.030	0.766	0.056	0.795	0.085	0.822
23	0.610	0.006	0.027	0.659	0.050	0.684	0.075	0.708
24	0.559	0.006	0.025	0.605	0.047	0.629	0.071	0.652
25	0.508	0.006	0.025	0.554	0.047	0.578	0.071	0.601
26	0.457	0.005	0.024	0.501	0.045	0.523	0.067	0.544
27	0.417	0.005	0.022	0.458	0.042	0.480	0.064	0.500
28	0.376	0.005	0.021	0.417	0.040	0.435	0.060	0.454
29	0.345	0.005	0.020	0.382	0.038	0.401	0.057	0.418
30	0.315	0.004	0.019	0.349	0.035	0.367	0.053	0.384
31	0.295	0.004	0.019	0.329	0.035	0.347	0.053	0.364
32	0.274	0.004	0.018	0.306	0.033	0.323	0.050	0.339
33	0.254	0.004	0.018	0.286	0.033	0.303	0.050	0.319
34	0.234	0.004	0.017	0.265	0.032	0.281	0.048	0.296
35	0.213	0.003	0.015	0.241	0.029	0.255	0.043	0.269
36	0.193	0.003	0.014	0.219	0.027	0.232	0.039	0.245
37	0.173	0.003	0.013	0.197	0.025	0.210	0.036	0.222
38	0.152	0.003	0.012	0.174	0.023	0.186	0.033	0.197
39	0.132	0.003	0.011	0.152	0.021	0.162	0.030	0.171
40	0.122	0.003	0.010	0.141	0.019	0.151	0.028	0.160
41	0.112	0.003	0.009	0.130	0.017	0.139	0.026	0.147
42	0.102	0.003	0.009	0.119	0.017	0.128	0.026	0.136
43	0.091	0.003	0.008	0.107	0.016	0.115	0.023	0.122

Notes : 1) For intermediate conductor diameter minimum increase corresponding to the next largest nominal conductor diameter shall be taken.
 2) Maximum overall diameter for intermediate conductor size is equal to Maximum overall diameter of next largest nominal conductor diameter corrected by difference in conductor diameters.

Reel Dimensions

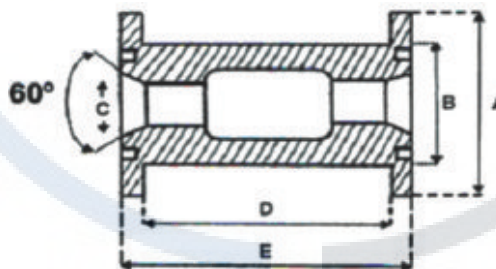


DIMENSIONS FOR TAPERED BARRELED PLASTIC REELS AS PER DIN-46383/ IEC-264-3-2

SPOOL TYPE	A	B	C	D	E	F	G	Wire size in Range In MM	Net weight Kgs max..
	MM	MM	MM	MM	MM	MM	MM		
PT-2	115	67	16	150	169	60	105	0.122-0.092	2
PT-4	140	85	26	172	200	74	122	0.152-0.092	4
PT-10	180	108	30	202	226	95	157	0.120-0.417	10
PT-20	230	150	32	247	277	110	212	0.234-1.016	20
PT-45	250	160	100	325	400	180	236	2.000-0.345	45
PT-90	315	200	100	425	550	180	300	0.700-1.600	90
PT-200	400	250	100	530	630	224	375	0.700-1.600	200

Application Specification Standards

IEC, DIN, IS Specification



DIMENSIONS FOR CYLINDRICAL PLASTIC REELS AS PER DIN-46399/ IEC-264-2-1

SPOOL TYPE	A	B	C	D	E	Wire size in Range In MM	Net weight Kgs max..
	MM	MM	MM	MM	MM		
125	125	65	22	70	90	0.091-0.274	3
200	200	101	40	130	152	0.300-0.660	11
250	250	110	40	125	152	0.417-2.000	22
310	310	200	36	160	200	2.032-4.064	35
350	355	224	36	160	200	Strips	45
400	400	250/300	40/56/127	230	290	Strips	60
450	450	250/300	40/56/127	230	290	Strips	80



United Copper Industries
Delivering quality on time, every time



PLANT ADDRESS

UNITED COPPER INDUSTRIES SHED NO.
A2/64 , G.I.D.C. , KILLA PARDI - 396125,
DIST. VALSAD PARDI 396125 Gujarat India